

Manlift Training Requirements

Every person operating or working off manlifts must be trained and licensed in the hazards that pertain to aerial work platform such as load capacity, height requirements, fall protection and other safety issues.

- Practical Training - is the hands-on portion of the program where trainees are shown the pre-use inspection, safe operating procedures, and parking/shutdown procedures. All trainees will then have the opportunity to operate the equipment and practice under the watchful eye of the program trainer in a safety controlled environment.



- Practical Evaluation - trainees are assessed to assure they have reached a minimum skill level and are individually evaluated using the equipment in a reasonably challenging course. Following this evaluation, trainees are de-briefed and given the opportunity to address any issues they may have regarding any phase of the program. Each successful trainee's will receive (his/her) license at the completion of their training.

Directions to Main Transportation Compound (Bldg. 35)

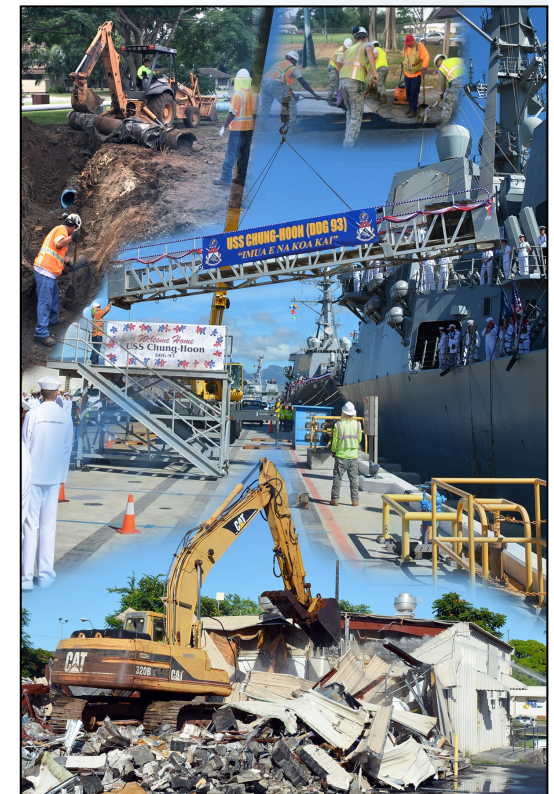
1. From Nimitz Gate proceed down South Avenue.
2. Turn right onto Russell Avenue.
3. TPL compound is on the left.
4. Visitor parking is outside of the compound's fence line, or just inside to the right.

Naval Facilities Engineering Command Hawaii

400 Marshall Road,
Transportation, Bldg. 35
JBPHH HI 96860-3139
FAX: 474-0153



Transportation—Operations



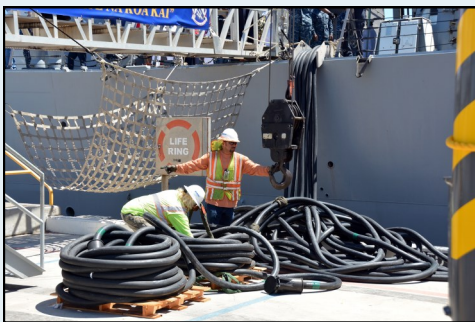
Product/Service Information
May 2018



Transportation—Operations

Naval Facilities Engineering Command (NAVFAC) Hawaii's Transportation Product Line is comprised of a highly-skilled group of mechanics and specialists who provide customers with a variety of transportation services at Joint Base Pearl Harbor-Hickam (JBPHH).

This brochure is to provide customers with information about two areas of transportation service - Crane, Rigging & Weight Handling Equipment (WHE) and Operations or Motor Vehicle Operations (MVO).



Crane, Rigging & Weight Handling

The WHE Division offers an extensive range of weight handling services such as:

- Lifting of Machinery, Personnel, Equipment & Explosive Ordinance
- Rigging Services
- Certification of Cranes & Rigging Equipment
- Rail Road Trackage Inspection
- Contractor Crane Inspection
- Certification of Manlifts & Weight Handling Equipment



Note: To quickly help our customers, we have a 24/7 on-call service, call 449-3100.

Points of Contact:

- Crane & Rigging/Forklift Services Contact 474-5224/265-4316
- Crane/Trackage Inspection 284-9489
- Rigging Gear Inspection 294-0560
- Contractor Crane Inspection 471-0808
- Inspection of Cranes/P300 347-2799



Motor Vehicle Operations

The MVO Division is in business to provide customers with various transportation solutions. They include:

- Heavy Equipment Support (Backhoe, Bucket Loader, Tractor Trailers)
- Manlift / Aerial Platforms
- Bus Services
- Grease Removal
- Pot Hole Asphalt Repair
- Fuel (Diesel) Deliveries
- Training & Licenses (Govt & CDL)
- Street Sweeping
- Demolition Services

To request MVO services, customers should call the Dispatch Office at 474-6221 and provide their request along with a Job Order Number to pay for the service. Then the request can be scheduled.